



青岛鑫光正机械设备有限公司

· 畜牧一体化解决方案专家 ·
Experienced of integrated feeding plans

青岛鑫光正钢结构股份有限公司
青岛鑫光正畜牧设备有限公司

地址Add: 青岛平度市三城路268号
电话Tel: +86-0532-83308000
网址Web: www.chinaxgz.cn
邮箱E-mail: farming@chinaxgz.com

Company Profile

公司简介



青岛鑫光正机械设备有限公司是青岛鑫光正集团下属子公司，公司是集研发设计、生产制造、工程安装、智能化畜牧养殖设备的一体化公司。公司始终致力于利用最先进的科学技术为全球畜牧行业研发和定制化产品方案，提供完备的技术支持，从家庭式农场到成套复合型商业农场的最佳解决方案，与各国市场始终保持着紧密的沟通与合作。

公司以精锐的技术人员组成鸡舍项目研发团队，通过项目调研学习、鸡舍房屋图集分解优化、科学专业的内外培训，形成独具优势的鸡舍标准化系列。

生产环节配置了先进的加工与检测设备，产品的关键部件均采用国内知名品牌。全新的结构设计使产品的功能更合理，使用更方便。

完善的工程安装队伍和售后服务队伍，始终坚持以客户满意为宗旨，受到国内外客户的高度认可和赞赏。

Qingdao Xinguangzheng mechanical equipment Co., Ltd is a branch of Qingdao Xinguangzheng steel Structure Co., Ltd, which is an integrated company providing design, manufacture, on site installation services of automated feeding equipments. We keep on offering advanced technologies for R&D in field of animal agriculture and for customized plans, and also offer you the best plans for family farms as well as sets of commercial farms, and we cooperate with international partners continuously.

Our prime R&D team has formulated a better standard series of chicken house through project research, disassembling & perfecting, training inside our company and external classes.

We have advanced processing & testing equipments for producing procedure, and the key members of our products are all of domestic famous mark. Our new type of structural design has made our products more practical and convenient.

Our construction team and after-sales team take our clients' satisfaction as the central part of our service, which has gained great admiration of our clients.



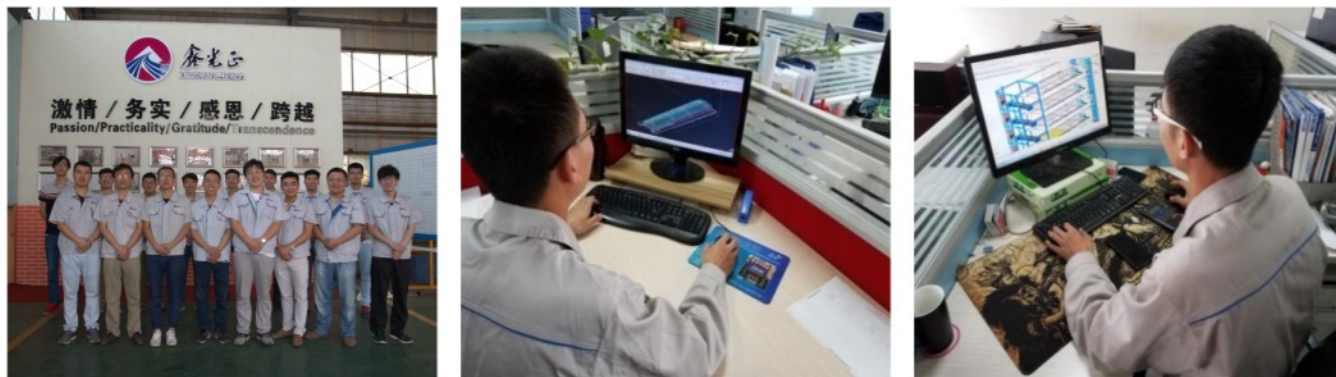
鑫光正集团留存
 保育钧题
 钢筋供骨质量
 节能降耗品牌

中国民营经济研究会会长保育钧为企业题词

Bao yujun, presiden of china private economy research,
 wrote an inscription for our corporation

专业的畜牧一体化团队
 Experienced team offering all-in-one service in field of animal agriculture

◎ 技术团队 Technical team



◎ 加工制造 Processing & Manufacturing



◎ 仓储团队 Storage keepers



◎ 安装售后团队 Installation & after-sales service

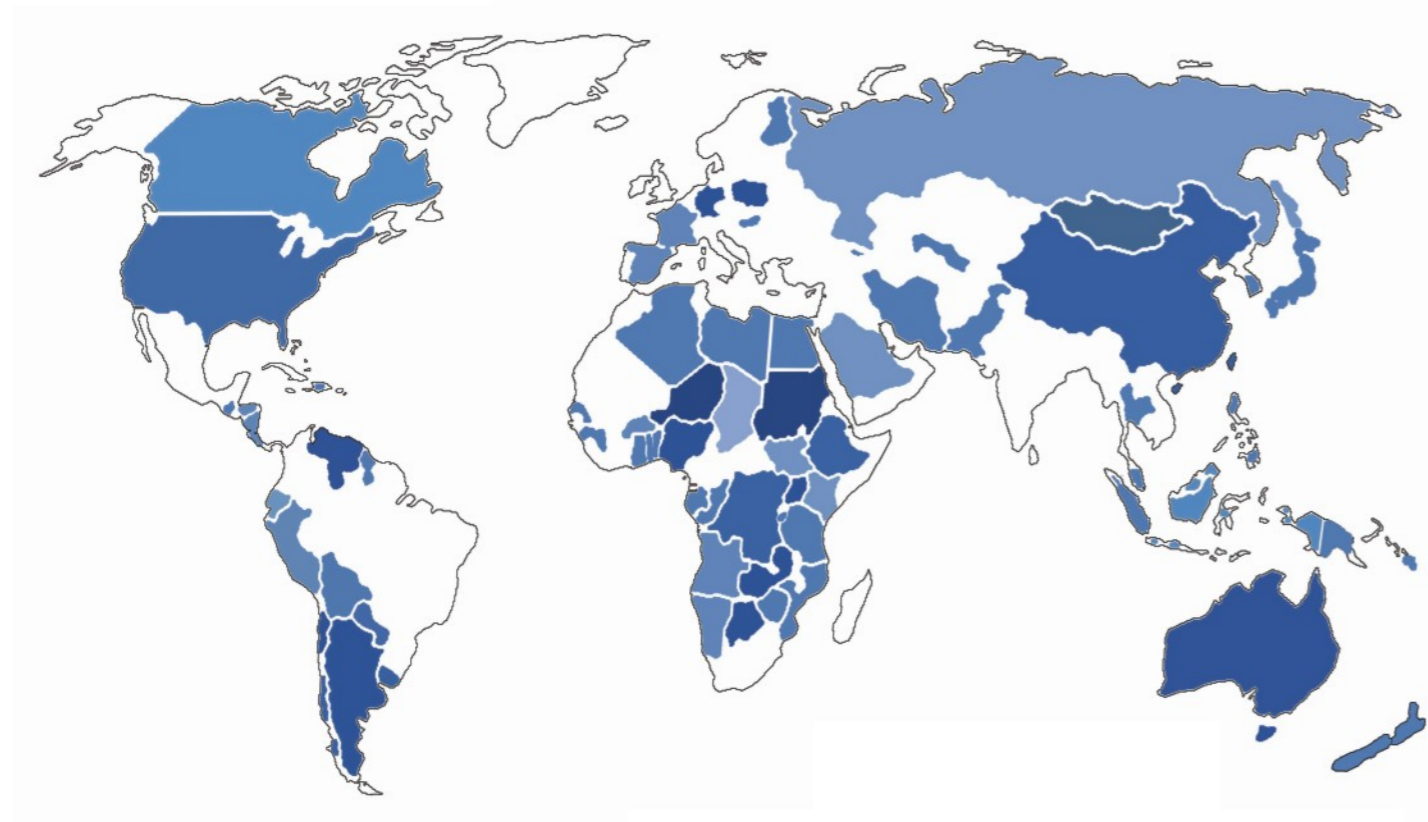


◎ 业务及管理团队 Business & management members



全球市场布局 >>

GLOBAL NETWORK



出口全球80多个国家

EXPORTED TO MORE THAN
80 COUNTRIES AROUND THE WORLD.

集约化概念描述 About "all-in-one"

◎ 散户传统养殖 Private farmer



◎ 集约化现代养殖 Modern all-in-one feeding mode

集约养殖即集约化养殖，指采用先进仪器设备和管理技术，实施高密度、高产量、高经济效益的养殖方法。
集约化管理是现代化企业集团提高效率与效益的基本取向。集约化的“集”就是指集中，集合人力、物力、财力、管理等生产要素，进行统一配置，集约化的“约”是指在集中、统一配置生产要素的过程中，以节俭、约束、高效为价值取向，从而达到降低成本、高效管理，今儿是企业集中核心力量，获得可持续竞争的优势。



All-in-one feeding mode is a feeding mode that aim at high work intensity, high production, high output and high economic efficiency with better equipments, advanced management & technology.

Integrated management is a basic direction for higher efficiency of modern enterprises. The word "Integrated" has 2 meanings, which contains the gathering of production factors like labour force, material and financial resources, and the value orientation of saving and high efficiency during the gathering of the production factors. In one word, integrated management aims at cutting down the cost and manage effectively, gathering the central forces of the company, as to gain the advantage of competition continuously.

一体化解决方案介绍 About all-in-one solution

一体化（钢结构房舍建设+养殖设备设计制造+环境控制设计+安装售后）较传统鸡舍大大缩短了建设周期，且各专业之间的配合更协调紧密，密封性和保温性更佳；

鸡舍由喂料系统、喂水系统、环控系统、照明系统组成，在满足鸡只的日常生活环境下，提高养殖的经济效益。

All-in-one solution(steel structure frame+feeding equipment+condition controller+after-sales service) saves construction period, and it is more leakproof and has better heat insulation due to the coordination between different majors.

The chicken house contains feeding system, condition control system and also lighting system, it ensures the living condition of the chicken/broilers/layers and increases the economic efficiency of feeding at the same time.

◎ 西藏鸡舍项目 Chicken house project in Tibet



鸡舍内部 Inner the chicken house



养殖设备组装
Assemble of the feeding equipments



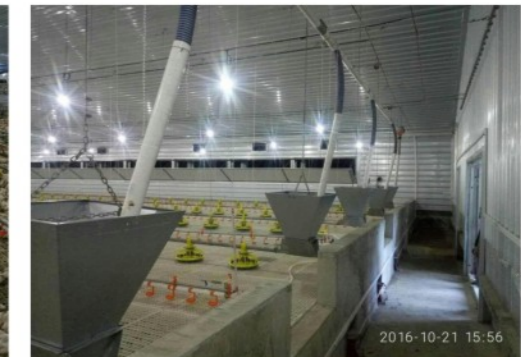
鸡舍外观 Chicken house profile

钢结构房舍介绍 Introduction of steel structure house



鑫光正机械设备有限公司能够提供完整的畜牧养殖房舍，包含平养及笼养鸡舍、猪舍、鸭舍、兔舍、鸽舍等养殖房舍。同时已针对不同的国家和地区制定了适合当地养殖的畜牧房舍（比如厄瓜多尔、菲律宾、卡塔尔等），通过对结构及维护材料的选择不同，我公司可提供高性价比和高质量的产品，以满足不同的客户需求。

Xinguangzheng mechanical equipment offers entire feeding house, including chicken house(chicken on ground or in cages), hogger, duck house, rabbitry, pigeon house and other type of feeding houses. And we have plan for different market on globe according to their local conditions. We are capable to provide our clients with best quality products as well as the best price through the change of the frame and material, as to meet the demand of our clients.

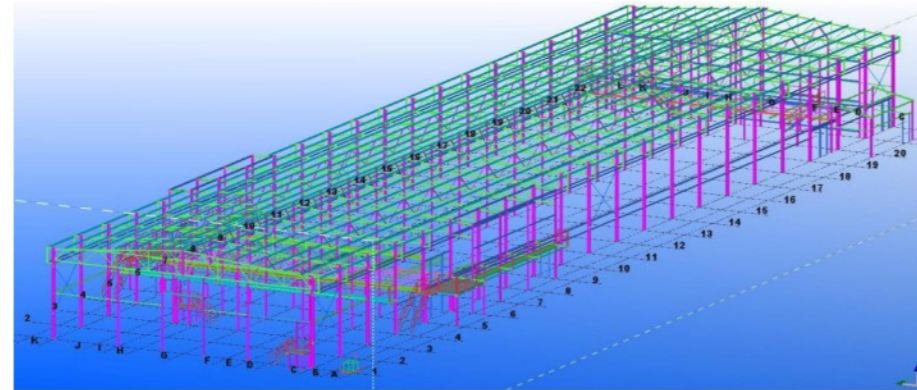


菲律宾平养肉鸡舍 The analysis of building design principle

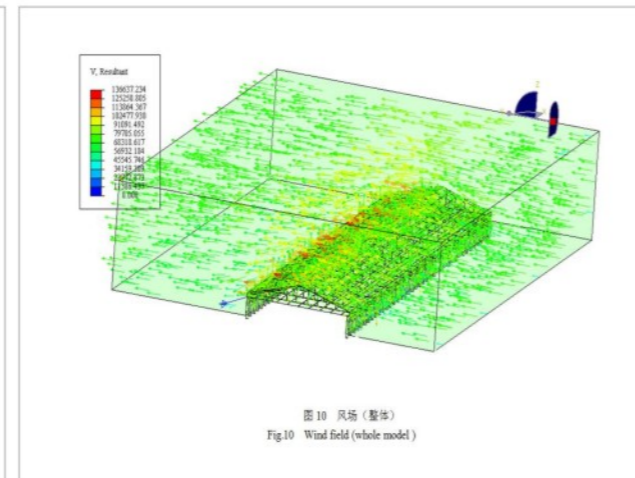
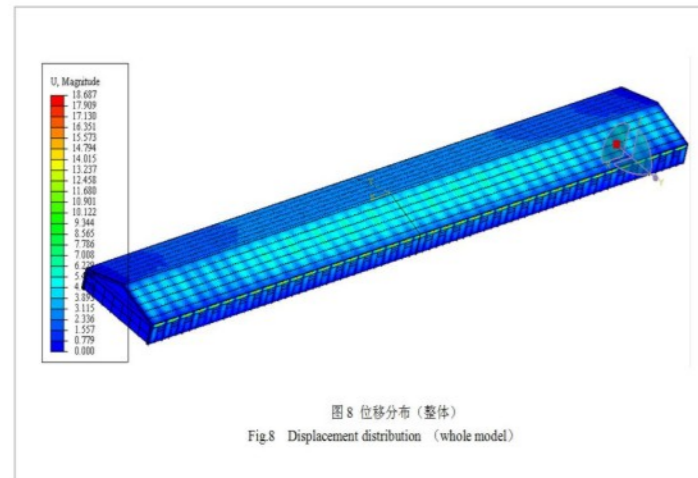
房屋设计原理分析 Analysis of housing design principles

通过结构设计软件 (PKPM, 3D3S, Madis) 对房舍模型进行分析, 可选取最合理的结构形式, 同时房舍内外通过维护结构布置, 有效控制舍内的密封性和保温性, 同环控设备共同配合, 达到养殖环控需求。

We select the most reasonable frame type through the help of frame designing softwares, and the layout inner and outer the feeding house is of enclosure, controlling the airtightness and heat insulation effectively. The condition controller runs in coordinate with the enclosure, aiming at the reach of the demand for feeding.



鸡舍TEKLA模型

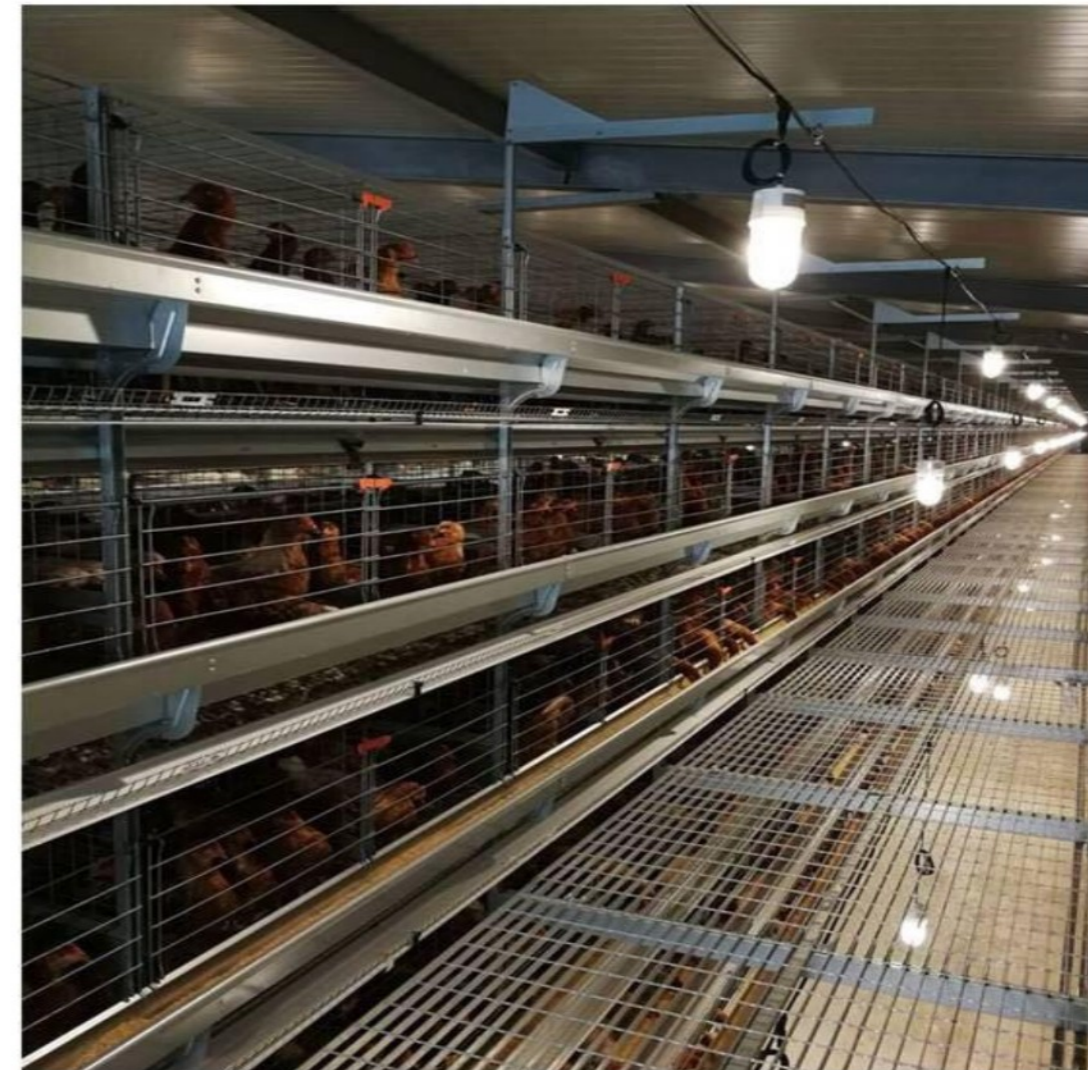


C型钢结构鸡舍



桁架结构鸡舍

6216蛋鸡笼养设备 Automated feeding equipments for layers (type 6216)



- ◆ 丝网材质锌铝合金表面处理(镀层厚度为180g), 是普通热镀锌丝网件耐腐蚀能力的3-4倍;
- ◆ 板材采用锌镁铝表面镀层 (镀层厚度为275g), 正常使用寿命在20年以上;
- ◆ 底网安装在张紧的钢丝上, 弹性大, 确保破蛋、污蛋以及裂纹蛋减小到一个绝对的最小值;
- ◆ 水线下有V型水槽避免滴水落到输送带上, 鸡粪含水量低;
- ◆ 料槽强度高, 可直接站人, 利于饲养员观察, 同时料槽带有内缘, 饲料浪费少。

- ◆ The surface treatment of the screen material is zinc alloy (the coating thickness is 180g) AND IS 3 to 4 times THAN NORMAL.
- ◆ the plate surface coating adopts zinc magnesium aluminum (the coating thickness is 275g), the service life is over 20 years.
- ◆ The bottom net is installed on the tensioned steel wire, IT HAS GREAT ELASTICITY to REDUCE the broken egg and dirt EGG.
- ◆ There is a v-shaped sink below the water to avoid dripping into the conveyor belt.
- ◆ The feeding trough is strength enough. The feeders can stand on it and observe. Meanwhile, the feeding trough has the inner edge, reduce the waste.

5300蛋鸡笼养设备

Automated feeding equipments for layers(type 5300)



产品名称 Product Name:	“H” Type egg laying chicken cage
材质 Material:	Galvanized Wire
层数 Tiers:	3/4/5/6/8 Tiers
每组养鸡数量 Capacity:	180/240/300/360/544
笼组尺寸 Size:	2285mm*600mm*430mm
鸡位面积Area/Chicken:	450cm ² /494cm ²

4240蛋鸡笼养设备

Automated feeding equipments for layers(type 4240)



产品名称 Product Name:	“H” Type egg laying chicken cage
材质 Material:	Galvanized Wire
层数 Tiers:	4 Tiers
每组养鸡数量 Capacity:	240
笼组尺寸 Size:	2250mm*650mm*430mm
鸡位面积Area/Chicken:	450cm ²

简易式蛋鸡笼ALD-4160、ALD-4128
 A-TYPE LAYER CAGE ALD-4160、ALD-4128



产品名称 Product Name:	A Type Layer Chicken Cages
材质 Material:	Hot Dip galvanized steel or Spray
层数 Tiers:	3/4 Tiers
每组养鸡数量 Capacity:	96/150/160/128 chickens per set
笼组尺寸 Size:	1870mm*370mm*370mm-315mm 1840mm*500mm*400mm
鸡位面积Area/Chicken:	432 cm ² /450 cm ²

自动化蛋鸡育雏设备
 Automated feeding equipments for chicken)



产品名称 Product Name:	“H” Type egg laying chicken cage
材质 Material:	Galvanized Wire
层数 Tiers:	4 Tiers
每组养鸡数量 Capacity:	240
笼组尺寸 Size:	1200mm*650mm*425mm
鸡位面积Area/Chicken:	390cm ²

肉鸡笼养设备（自动出鸡） The suit of (automated) feeding equipment for broilers



1. 笼网选用Q215材质钢丝焊接后热浸锌处理，使用寿命10-15年；
2. 育雏期配备喂食调节板，便于调节喂料高度；
3. 加强型PVC食槽，添加抗老化剂材质，使用寿命更长；
4. 水线高度可调，便于满足不同日龄鸡只的饮水高度需求，最高升起高度38cm；
5. 笼子中间预留300-400mm空气通道，增加鸡舍内通风量。

1. Q215 steel wire welded with hot dip zinc treatment, with a service life of 10-15 years.
2. equipped with feeding adjustment board to adjust feeding height.
3. Reinforced PVC feeding trough, adding anti-aging agent material, longer service life.
4. The height of the water line can be adjustable to meet the high demand of drinking water of different day age chickens, with the highest elevation of 38cm.
5. Reserve 300-400mm air passage in the middle of the cage to increase the ventilation in the chicken house.



层叠式肉鸡笼养设备（标准型）

现代化鸽子笼养系统 Modern automated feeding system for pigeon



热镀锌丝焊接，行车式喂料，速度可调节，饮水采用乳头式饮水，确保鸽子饮水清洁，自动清粪系统使鸽舍内更加整洁卫生，防止鸽子疾病传染。

Galvanized wire welding, driving feeding, speed adjustable, nipple drinking, to ensure that the pigeon clean drinking water, automatic manure cleaning system make it clean, prevent the pigeon disease.

标准集装箱蛋鸡笼养
 Layer feeding in standard container



标准40尺海运箱改造，内放4层A型全自动设备，可养殖500只蛋鸡，自动喂料、喂水、捡蛋、清粪、智能环境控制，不受地域空间限制，机动性灵活性极高。

We rebuild 40ft standard container into the chicken house, with a 4-floor fully-automated equipment of A type. The house is capable for feeding 500 layers and can automatically feed, collect eggs, clean manure and control the conditions. It is also free from the affect of regional space and has high flexibility.



兔子舍
 Rabbitry

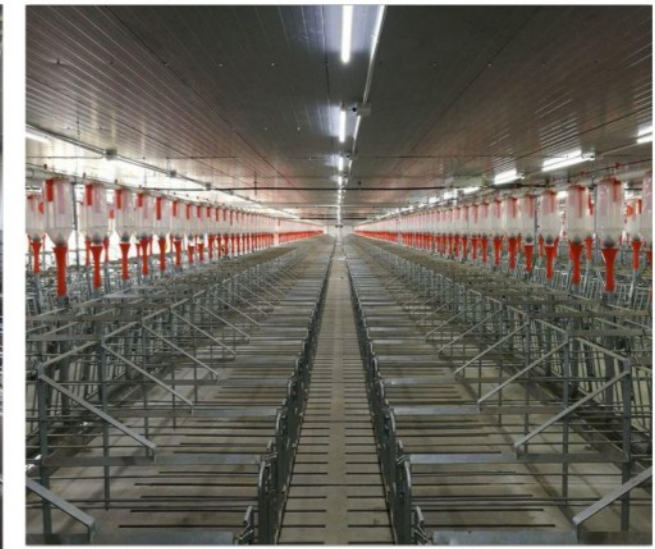
◆ 卡塔尔农场 The farm in Qatar



兔子笼
Rabbit hutch



养猪
Pig project



养猪合作
 Partner

鑫光正机械设备有限公司目前与国内大型养殖公司建立战略合作关系，其中包含河南牧原集团、北京景鹏、青岛汉世伟畜牧、青岛银巢机械等公司，通过钢结构+养殖设备的合作模式，能够最大程度节约建设成本，实现房屋与设备的有效配合。

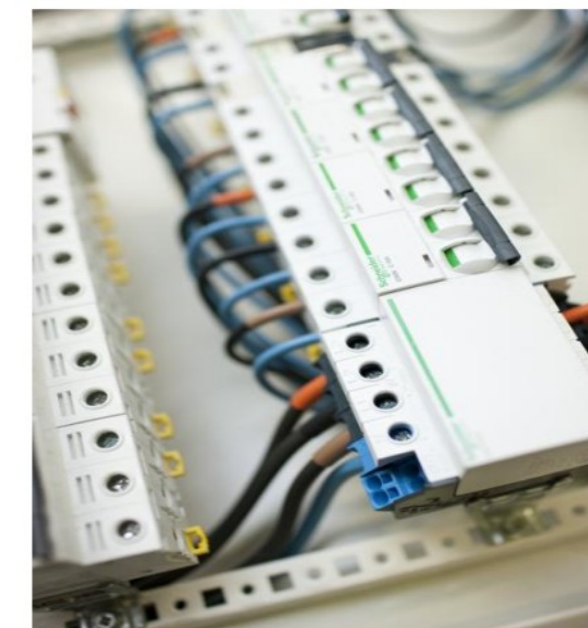
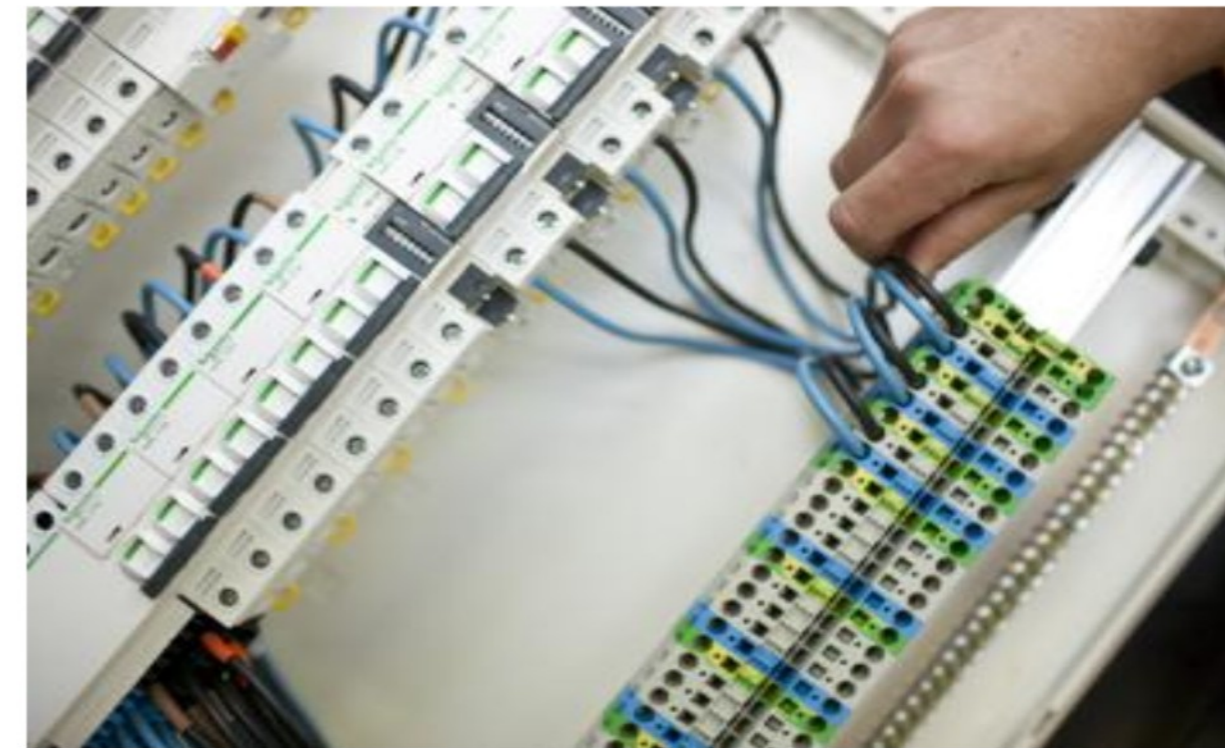
Xin Guang Zheng Machinery Equipment Co., Ltd. is establishing strategic cooperative relations with the domestic large-scale aquaculture companies, including Henan Pastoral Group, Beijing-Peng, Qingdao Han Wei, Qingdao silver nest machinery and so on. Through the steel structure with equipment cooperation model, to save construction costs, to get effective cooperation between house and equipment.



电气
 Electric

提供定制化电控系统，模块化设计，安装维修省时省心

We offer customized electric control system, designing in different modules, saves time and energy during installation and maintenance stages.



环控器 Environmental controller

◆ Agrologic 全系列产品 All-series product



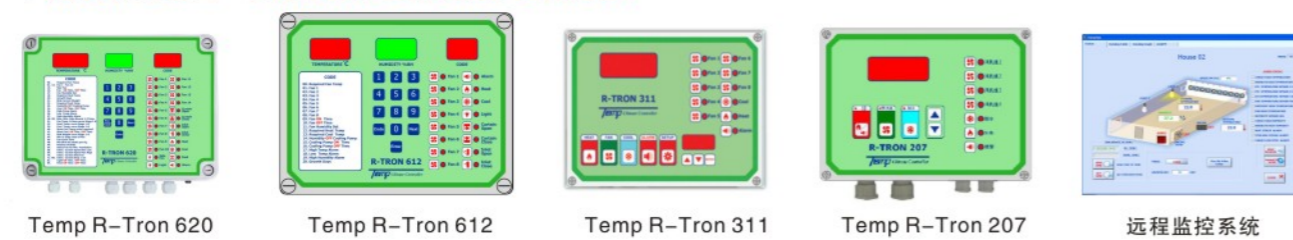
◆ Agrologic 控制器产品 Controller



◆ Agrologic 传感器 Sensor



◆ 泰牧 (TEMP) 环境控制器 Condition controller



养殖专用空调 Air conditioning for breeding

畜牧养殖专用空调的特点:

1. 精准温度控制, 温度控制范围 $\pm 2^{\circ}\text{C}$, 快速冷却降温, 降温能力 20°C 。
2. 精确湿度控制, 控制范围 $\pm 5\text{RH}$ 。
3. 产品齐全, 可根据地理环境灵活配置, 尤其适合湿热环境使用。
4. 适用于养鸡、养猪、养兔、温室大棚等环境使用。

Specialty:

1. Accurate temperature control: range ± 2 , fast cooling, cooling capacity 20.
2. Accurate humidity control, range of 5RH.
3. Full kind of the product .can be configured according to the geographical environment, especially suitable for hot and humid environment.
4. Suitable for the hen house/ pig house/rabbit house/green house and so on.

◆ 超低温型空气源热泵机组 Super-low temperature mode air source heat pump unit:



◆ 螺杆式水源热泵机组 Screw water resource heat pump unit:



◆ 水冷螺杆式冷水机组 Screw water cooled chiller:



◆ 模块化水冷式冷水机组 Modular water-cooled chiller:



◆ 屋顶式空调机组 Rooftop air-conditioning unit:

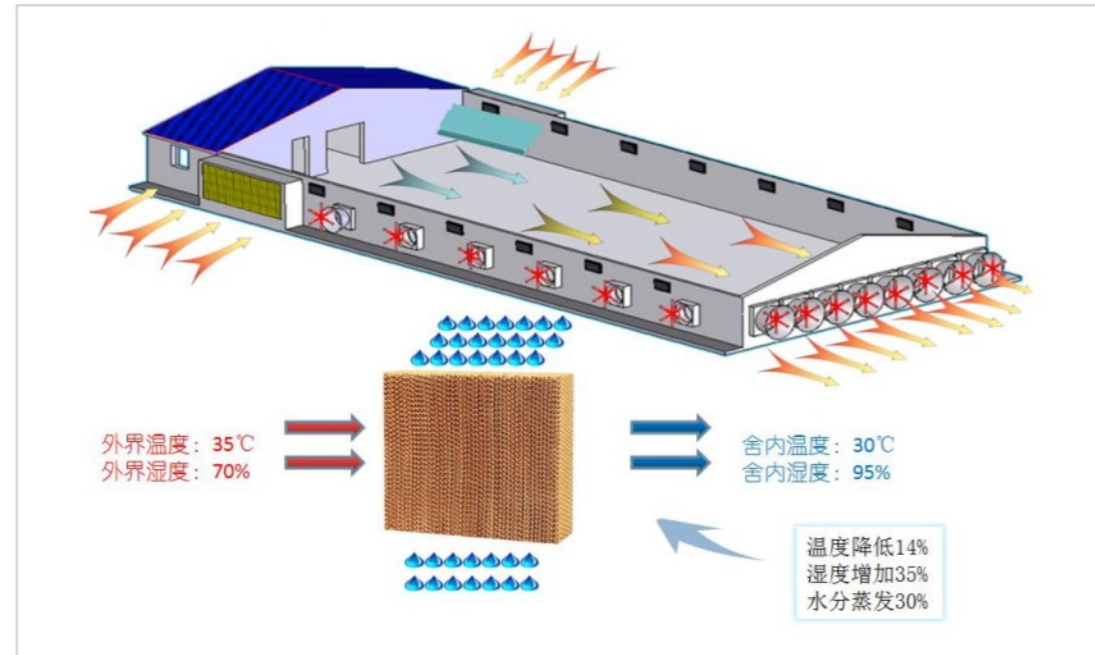


◆ 柜式空调机组 Cabinet air-conditioning unit:

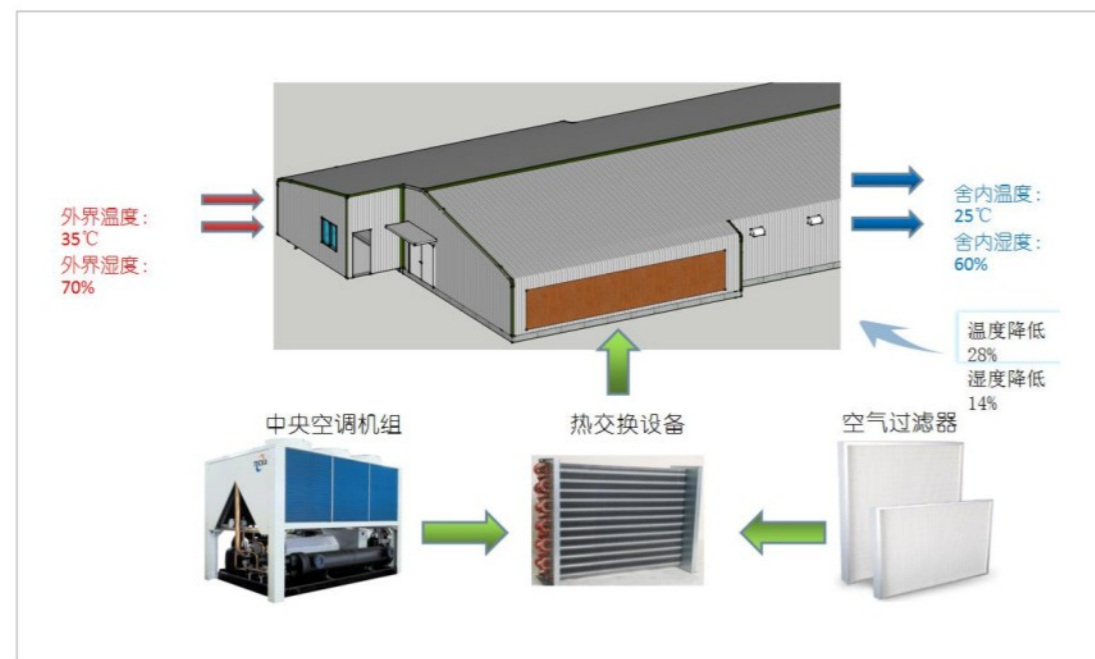


传统降温方式与空调降温对比 traditional cooling mode versus cooling mode of AC

◆ 畜牧养殖降温方案介绍-湿帘降温 The for feeding & cooling solutions – wet curtain cooling



◆ 畜牧养殖降温方案介绍-负压中央空调降温 The for feeding & cooling solutions –cooling mode of central air-conditioning (negative pressure)



肉鸡平养整体设备 The suit of (automated) feeding equipment for broilers



◆ 多米尼加肉鸡平养项目

- 1.150m*14m*2.5m;
 - 2.养殖39000只肉鸡;
 - 3.全自动喂料、喂水、环境控制。
- 1.150m*14m*2.5m;
 2. Dominican broiler chicken house project, for 39000 broiler.
 3. automatic feeding, drinking, environment control.

肉鸡平养设备
Automated feeding equipment for broilers

◆ 肉鸡平养料盘
Feeding plates
for broilers



FC04410000



FC04350000

◆ 防断电脱扣 Power off resistant trip



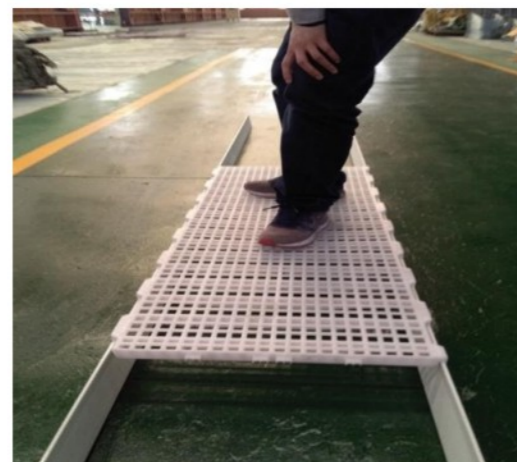
DP03000000

◆ 多寿加药器 Dosatron



WJ04620001

◆ 肉鸡地板、横梁及支腿
The floor for broilers,
cross beam and
landing leg



CM04100101/CM04100102



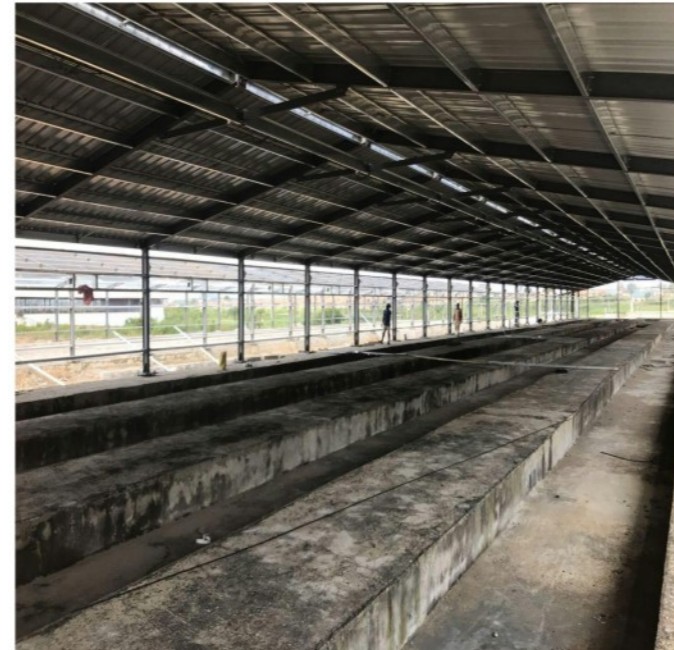
CM04710003

菲律宾平养肉鸡舍
Philippine



123m*15m*2.8m

尼日利亚鸡舍
Nigeria



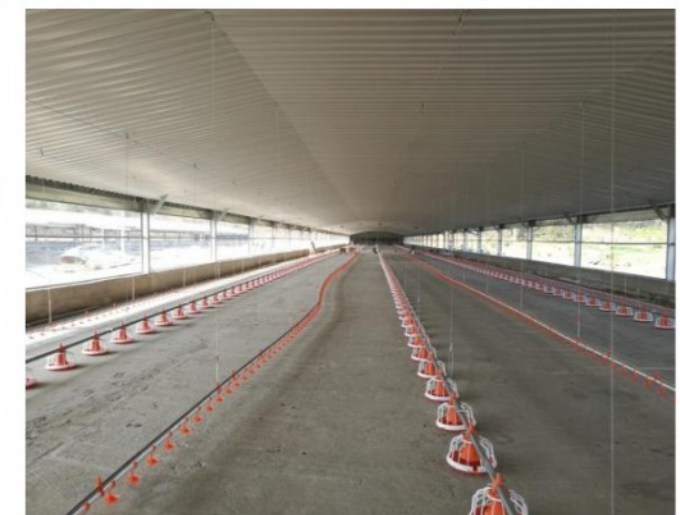
杭州笼养蛋鸡舍
Hangzhou, China



加纳蛋鸡舍
Ghana



厄瓜多尔肉鸡舍
Ecuador



卡塔尔农场项目
 Qatar



鸡舍10栋
 鹌鹑舍14栋
 兔子舍2栋
 鸭子舍3栋
 屠宰舍1栋
 仓库1座

Chicken house*10
 Quail house*14
 Rabbitry*2
 Duck house*3
 Slaughterhouse*1
 Storage*1

多米尼加平养肉鸡舍
 Dominican

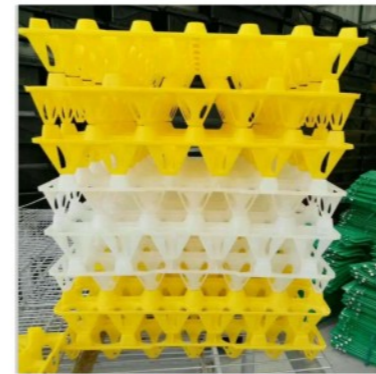


鑫光正农场
 Xin guang Zheng farm

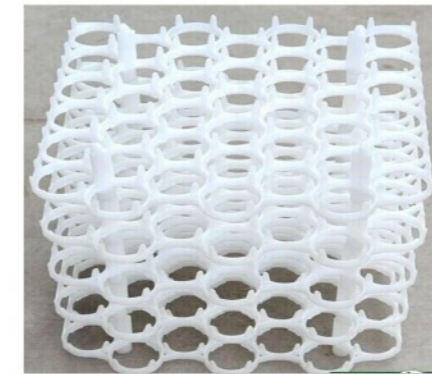


单独销售产品
 Products sold at retail

◆ 蛋托 Egg carton



IT04100101



IT04100102



IT04100103

◆ 肉鸡地板
Floor for layers



CM04100104

◆ 产蛋箱
Nest box



LN03000001

单独销售产品
Products sold at retail



WJ04400001



WJ04400102



WJ04400103



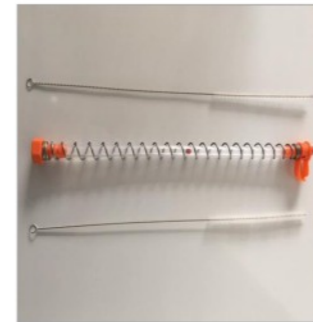
WJ04400104



WJ04510005



WJ04420001



WJ04300106



WJ04200107



WJ04400108



WJ04400109



WJ04400110



WJ04400111



WJ04100112



WJ04400013



WJ044200108



WJ04370001

合作展示
Our partners

优质企业合作，保证产品质量。

We cooperate with excellent partners and we promise to offer you the best quality.

